

# VIVIENDA 10

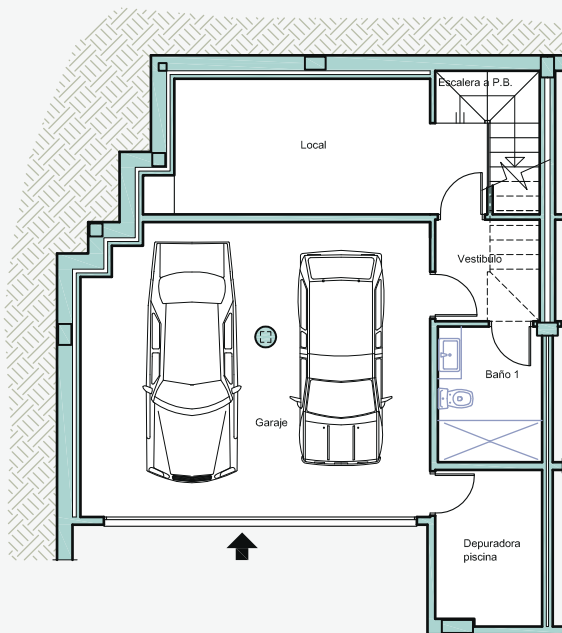
## SUPERFICIE TOTAL CONSTRUIDA

SUPERFICIE VIVIENDA = 268.20 m<sup>2</sup>  
 SUPERFICIE GARAJE = 41.90 m<sup>2</sup>

SUPERFICIE TERRAZAS = 135.00 m<sup>2</sup>  
 SUPERFICIE JARDÍN = 71.70 m<sup>2</sup>

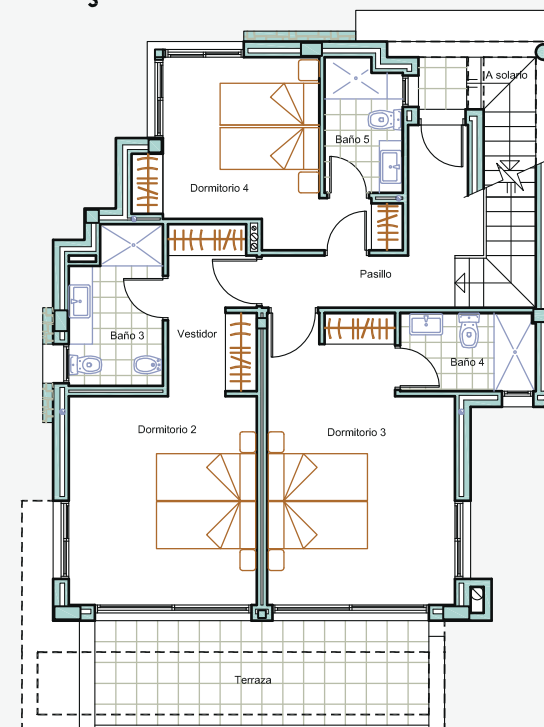
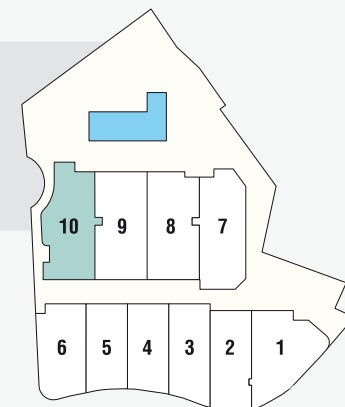
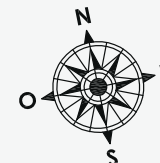
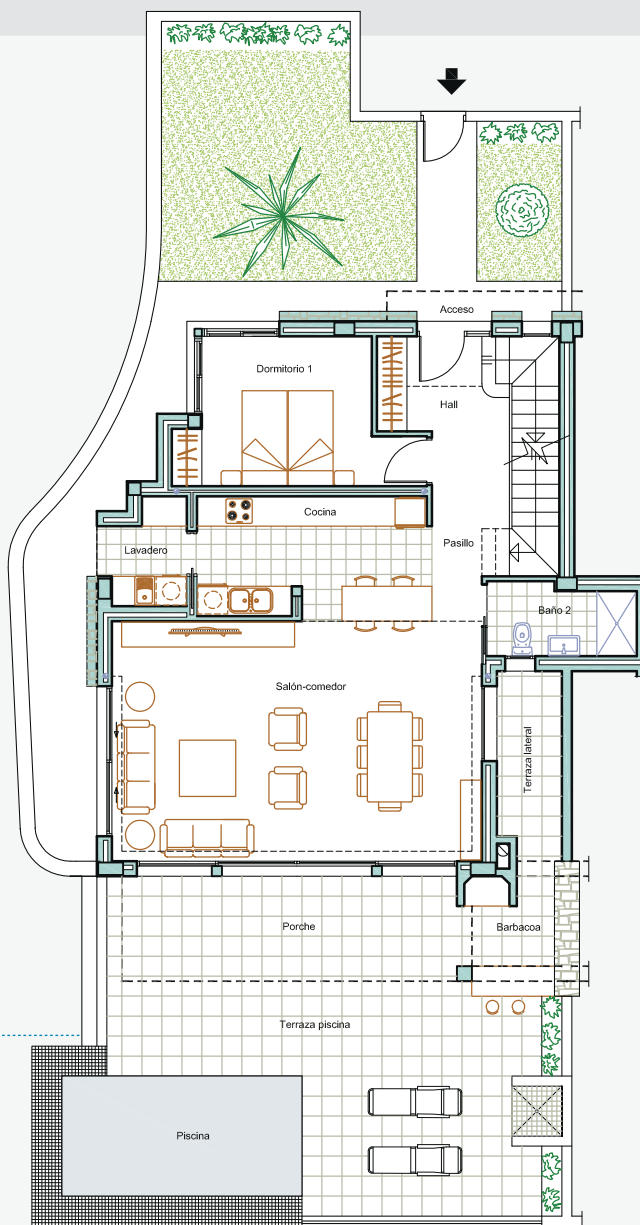
## PLANTA SÓTANO

SUP. CONS. LOCAL = 42.30 m<sup>2</sup>  
 SUP. CONS. GARAJE = 41.90 m<sup>2</sup>



## PLANTA BAJA

SUP. CONS. VIVIENDA = 96.00 m<sup>2</sup>  
 SUP. CONS. PORCHE = 14.70 m<sup>2</sup>  
 SUP. CONS. TERRAZAS = 35.10 m<sup>2</sup>



## PLANTA ALTA

SUP. CONS. VIVIENDA = 88.00 m<sup>2</sup>  
 SUP. CONS. TERRAZAS = 14.70 m<sup>2</sup>