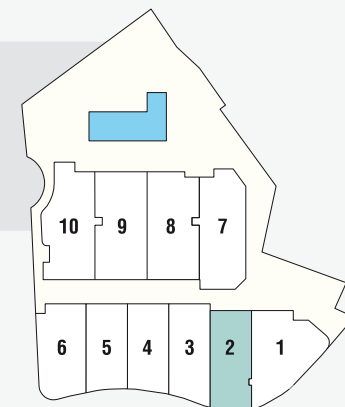


VIVIENDA 2

SUPERFICIE TOTAL CONSTRUIDA

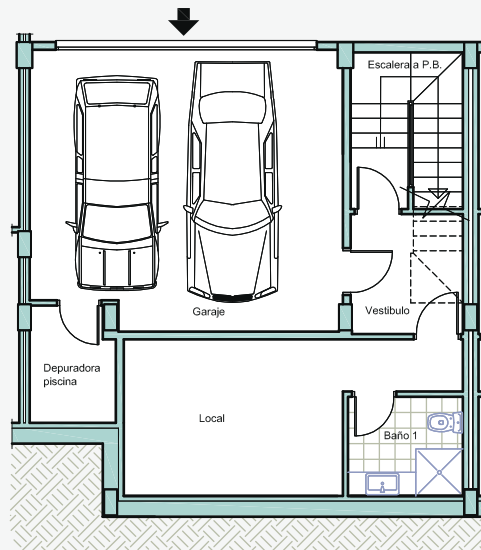
SUPERFICIE VIVIENDA = 221.15 m²
 SUPERFICIE GARAJE = 33.40 m²

SUPERFICIE TERRAZAS = 58.55 m²
 SUPERFICIE JARDÍN = 31.00 m²



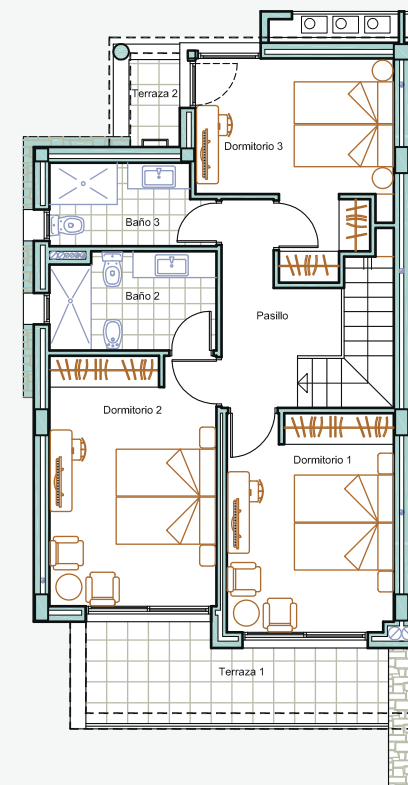
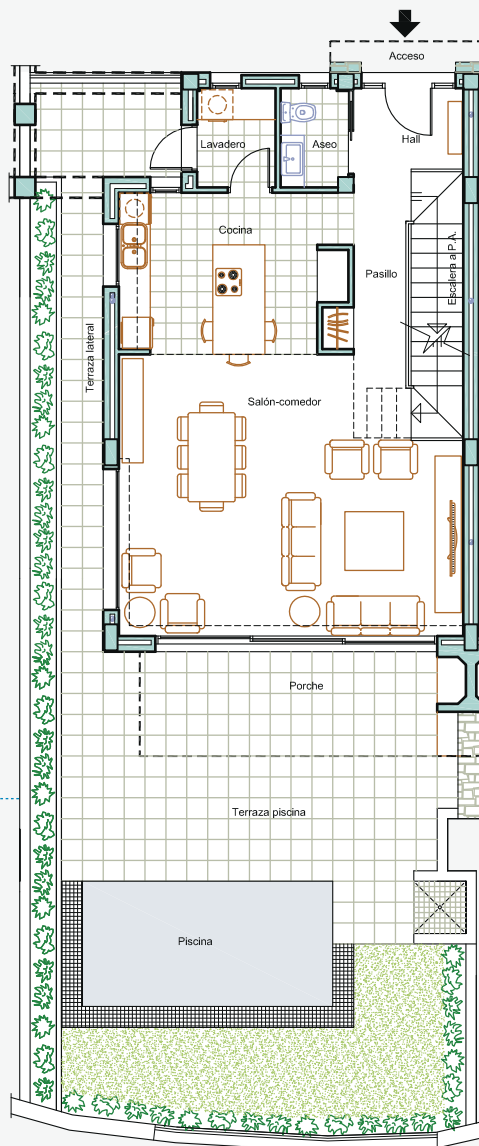
PLANTA SÓTANO

SUP. CONS. LOCAL = 38.00 m²
 SUP. CONS. GARAJE = 33.40 m²



PLANTA BAJA

SUP. CONS. VIVIENDA = 75.25 m²
 SUP. CONS. PORCHE = 12.70 m²
 SUP. CONS. TERRAZAS = 44.55 m²



PLANTA ALTA

SUP. CONS. VIVIENDA = 74.50 m²
 SUP. CONS. TERRAZAS = 14.00 m²

