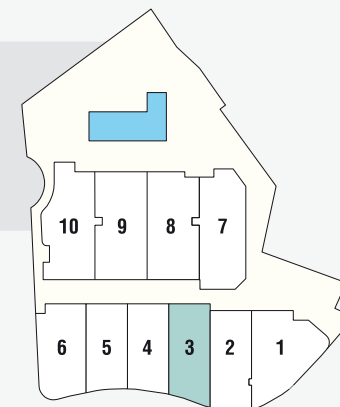


VIVIENDA 3

SUPERFICIE TOTAL CONSTRUIDA

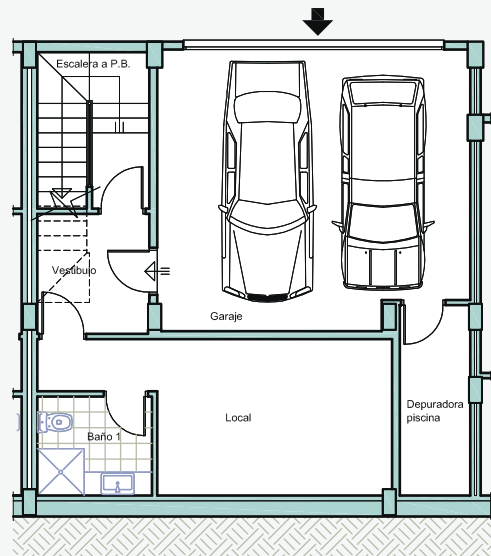
SUPERFICIE VIVIENDA = 221.35 m²
 SUPERFICIE GARAJE = 32.80 m²

SUPERFICIE TERRAZAS = 55.85 m²
 SUPERFICIE JARDÍN = 29.70 m²



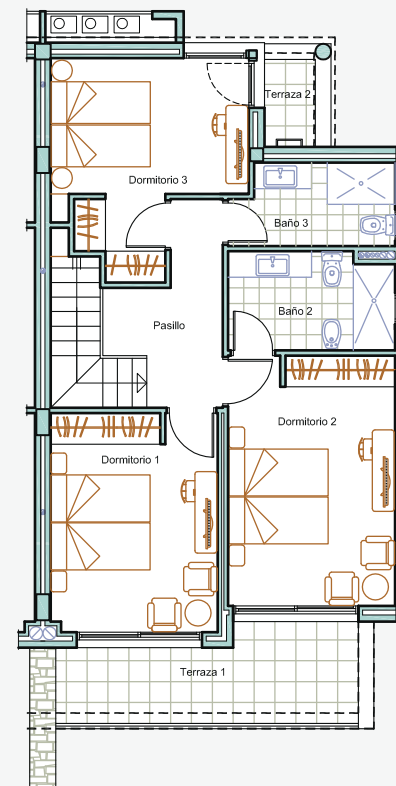
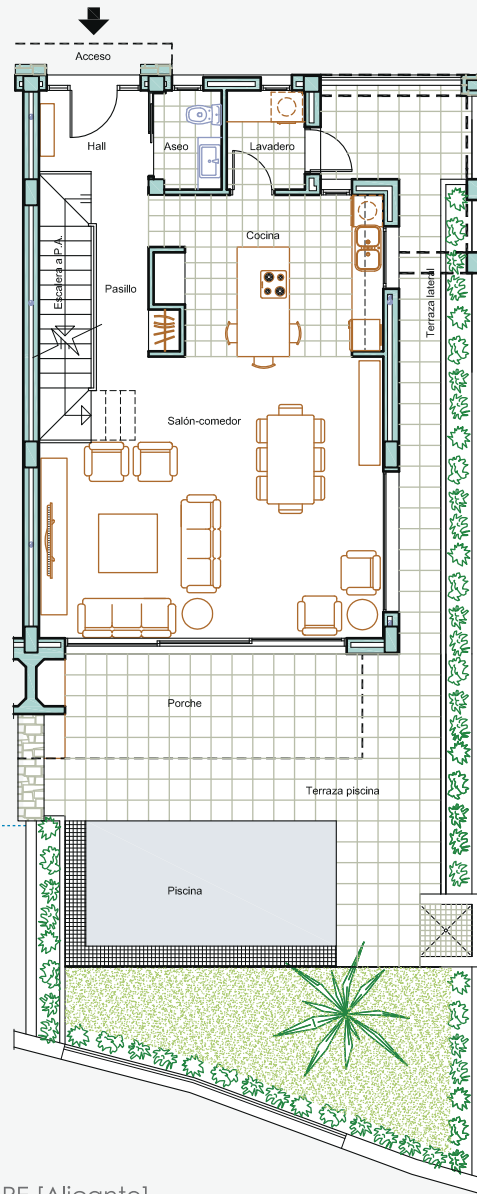
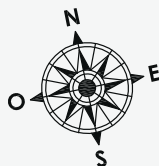
PLANTA SÓTANO

SUP. CONS. LOCAL = 38.00 m²
 SUP. CONS. GARAJE = 32.80 m²



PLANTA BAJA

SUP. CONS. VIVIENDA = 75.25 m²
 SUP. CONS. PORCHE = 12.70 m²
 SUP. CONS. TERRAZAS = 41.85 m²



PLANTA ALTA

SUP. CONS. VIVIENDA = 74.50 m²
 SUP. CONS. TERRAZAS = 14.00 m²