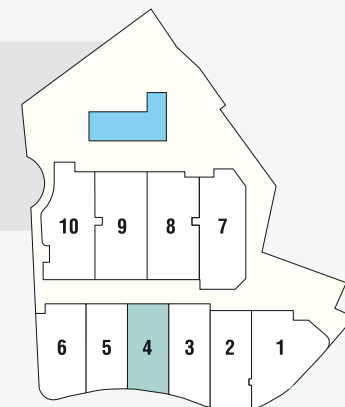


# VIVIENDA 4

## SUPERFICIE TOTAL CONSTRUIDA

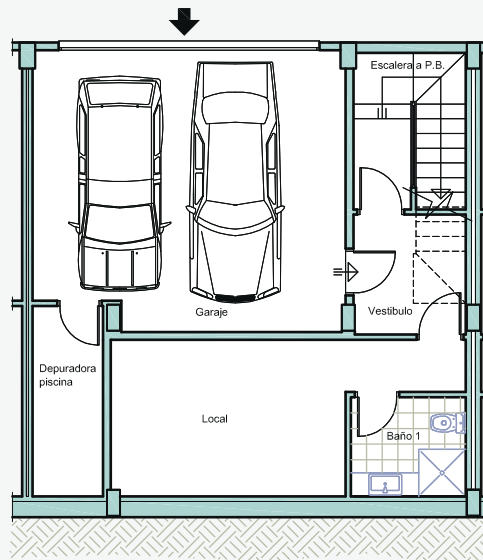
SUPERFICIE VIVIENDA = 221.35 m<sup>2</sup>  
 SUPERFICIE GARAJE = 32.80 m<sup>2</sup>

SUPERFICIE TERRAZAS = 45.45 m<sup>2</sup>  
 SUPERFICIE JARDÍN = 23.60 m<sup>2</sup>



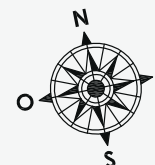
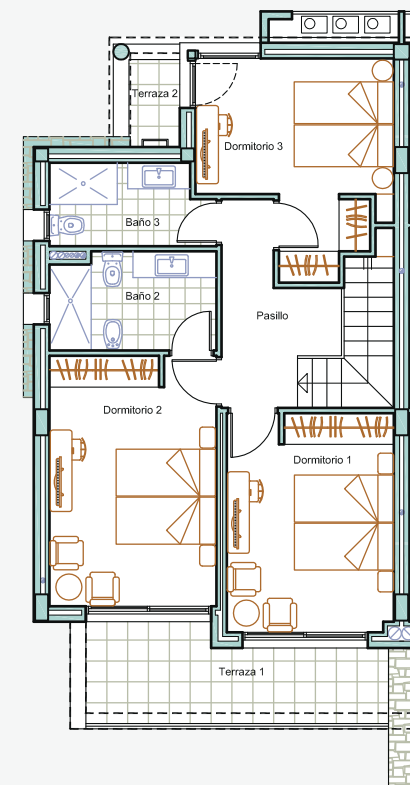
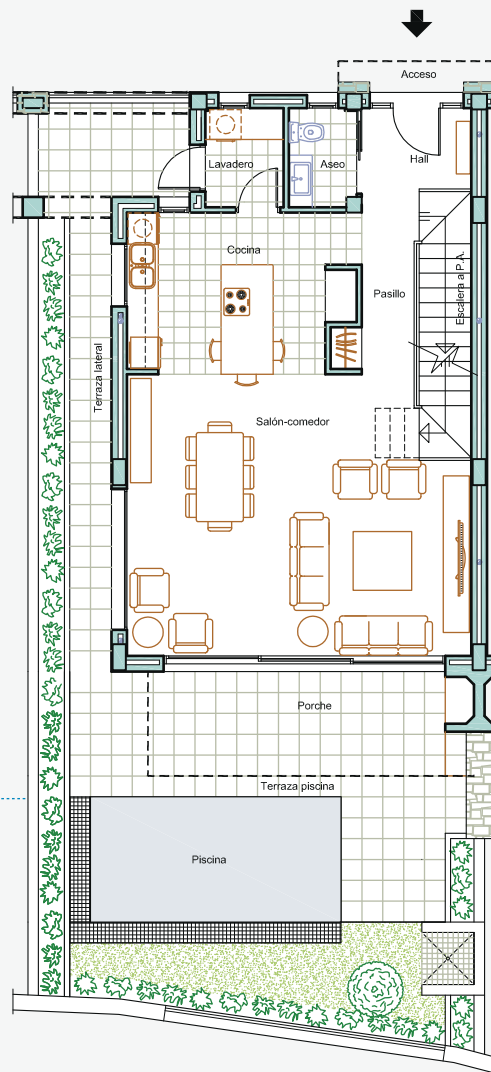
## PLANTA SÓTANO

SUP. CONS. LOCAL = 38.80 m<sup>2</sup>  
 SUP. CONS. GARAJE = 32.80 m<sup>2</sup>



## PLANTA BAJA

SUP. CONS. VIVIENDA = 74.50 m<sup>2</sup>  
 SUP. CONS. PORCHE = 12.70 m<sup>2</sup>  
 SUP. CONS. TERRAZAS = 31.45 m<sup>2</sup>



## PLANTA ALTA

SUP. CONS. VIVIENDA = 74.50 m<sup>2</sup>  
 SUP. CONS. TERRAZAS = 14.00 m<sup>2</sup>