

VIVIENDA 5

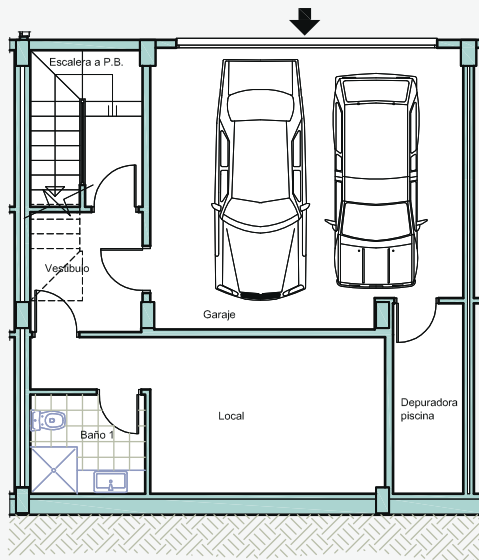
SUPERFICIE TOTAL CONSTRUIDA

SUPERFICIE VIVIENDA = 221.35 m²
 SUPERFICIE GARAJE = 32.80 m²

SUPERFICIE TERRAZAS = 47.15 m²
 SUPERFICIE JARDÍN = 19.40 m²

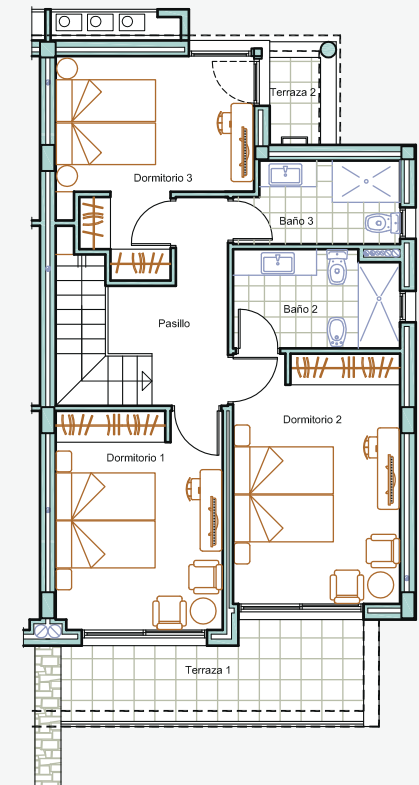
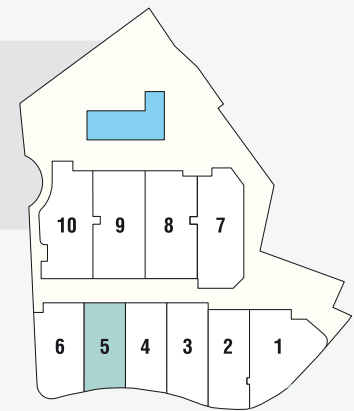
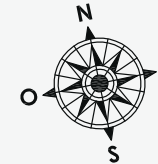
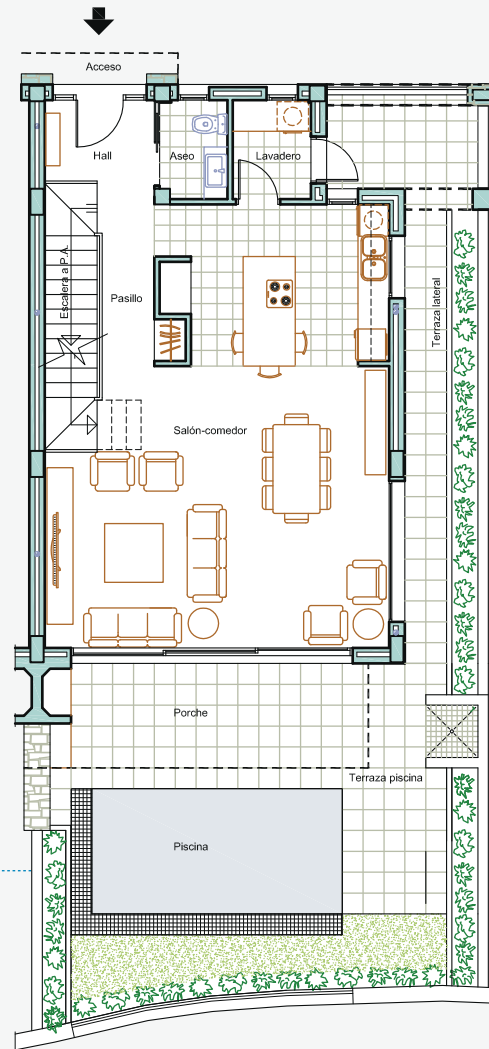
PLANTA SÓTANO

SUP. CONS. LOCAL = 38.00 m²
 SUP. CONS. GARAJE = 32.80 m²



PLANTA BAJA

SUP. CONS. VIVIENDA = 75.25 m²
 SUP. CONS. PORCHE = 12.70 m²
 SUP. CONS. TERRAZAS = 33.15 m²



PLANTA ALTA

SUP. CONS. VIVIENDA = 74.50 m²
 SUP. CONS. TERRAZAS = 14.00 m²