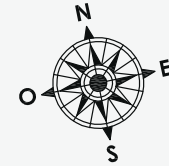
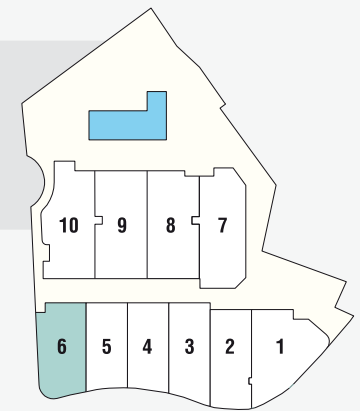


VIVIENDA 6

SUPERFICIE TOTAL CONSTRUIDA

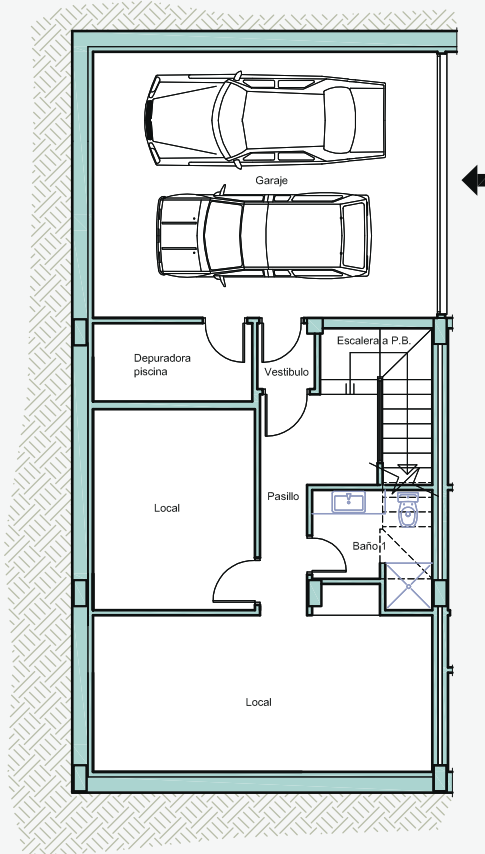
SUPERFICIE VIVIENDA = 246.95 m²
 SUPERFICIE GARAJE = 38.80 m²

SUPERFICIE TERRAZAS = 54.10 m²
 SUPERFICIE JARDÍN = 49.45 m²



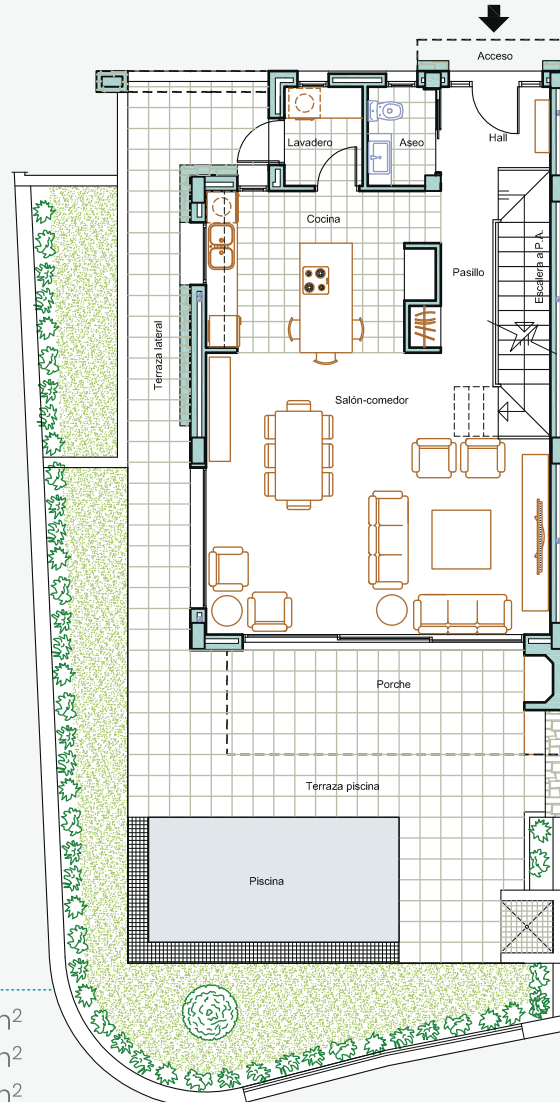
PLANTA SÓTANO

SUP. CONS. LOCAL = 58.40 m²
 SUP. CONS. GARAJE = 38.80 m²



PLANTA BAJA

SUP. CONS. VIVIENDA = 75.25 m²
 SUP. CONS. PORCHE = 12.70 m²
 SUP. CONS. TERRAZAS = 40.10 m²



PLANTA ALTA

SUP. CONS. VIVIENDA = 74.50 m²
 SUP. CONS. TERRAZAS = 14.00 m²

