

VIVIENDA 7

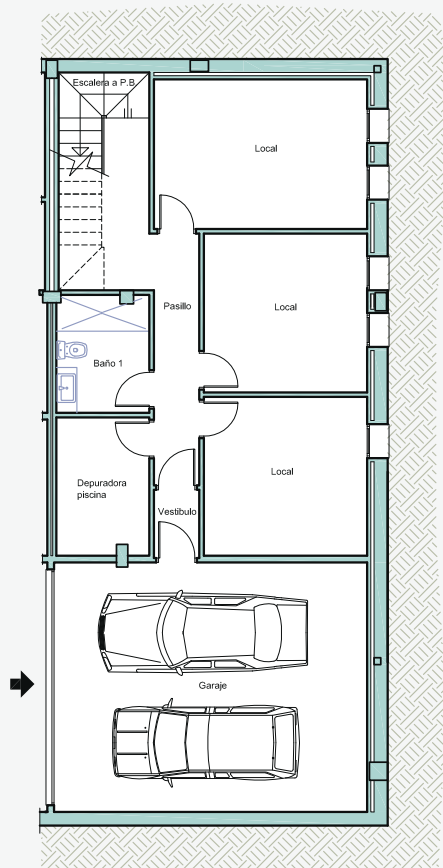
SUPERFICIE TOTAL CONSTRUIDA

SUPERFICIE VIVIENDA = 302.50 m²
 SUPERFICIE GARAJE = 41.80 m²

SUPERFICIE TERRAZAS = 131.60 m²
 SUPERFICIE JARDÍN = 71.60 m²

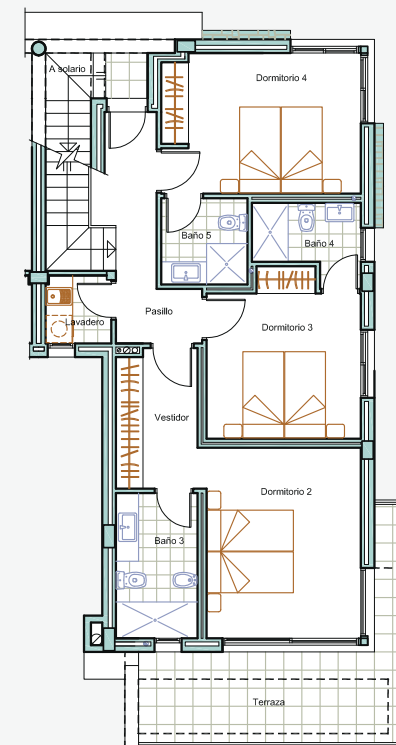
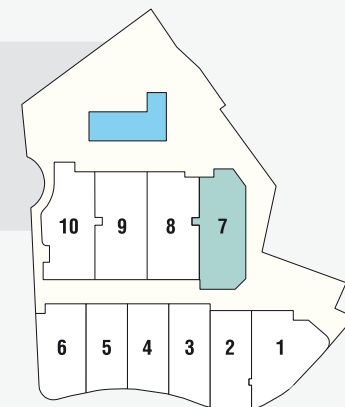
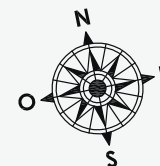
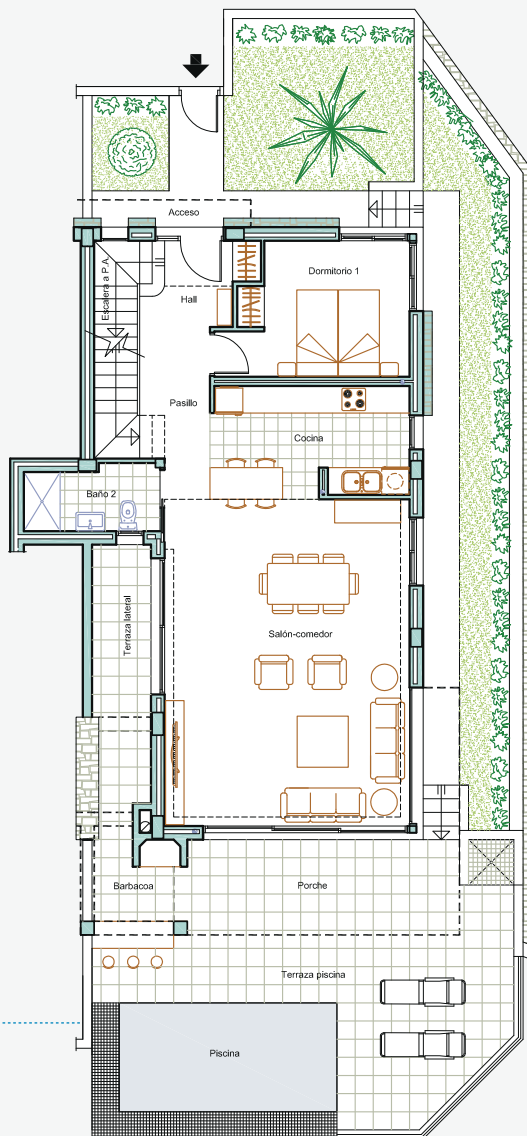
PLANTA SÓTANO

SUP. CONS. LOCAL = 81.60 m²
 SUP. CONS. GARAJE = 41.80 m²



PLANTA BAJA

SUP. CONS. VIVIENDA = 93.60 m²
 SUP. CONS. PORCHE = 15.90 m²
 SUP. CONS. TERRAZAS = 32.40 m²



PLANTA ALTA

SUP. CONS. VIVIENDA = 85.50 m²
 SUP. CONS. TERRAZAS = 21.00 m²