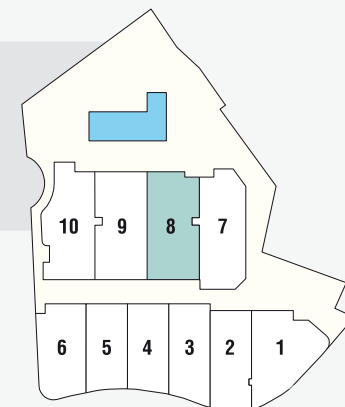


SUPERFICIE TOTAL CONSTRUIDA

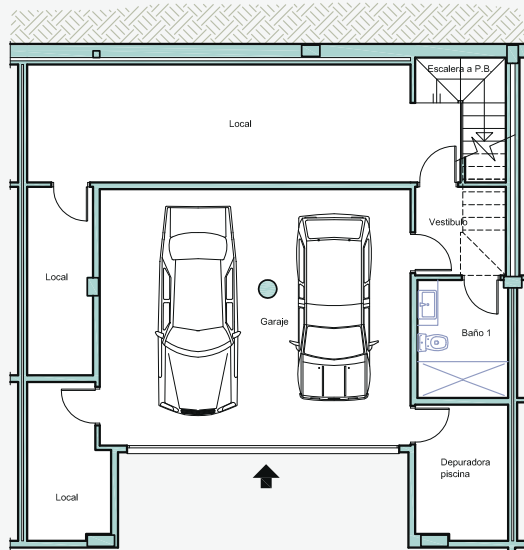
SUPERFICIE VIVIENDA = 293.35 m²
 SUPERFICIE GARAJE = 40.80 m²

SUPERFICIE TERRAZAS = 143.65 m²
 SUPERFICIE JARDÍN = 68.95 m²



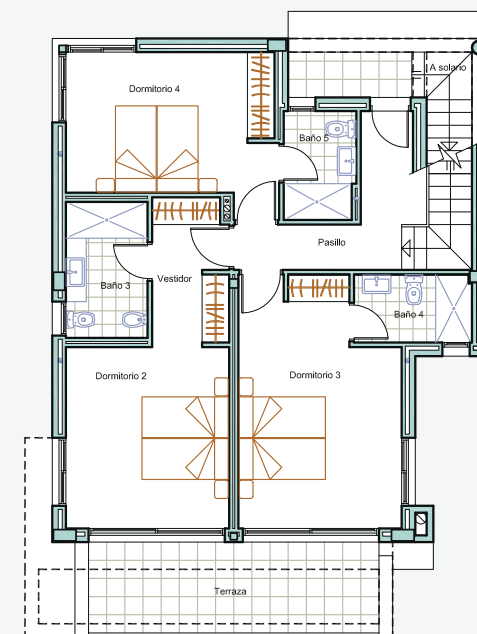
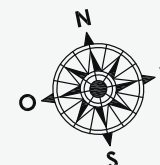
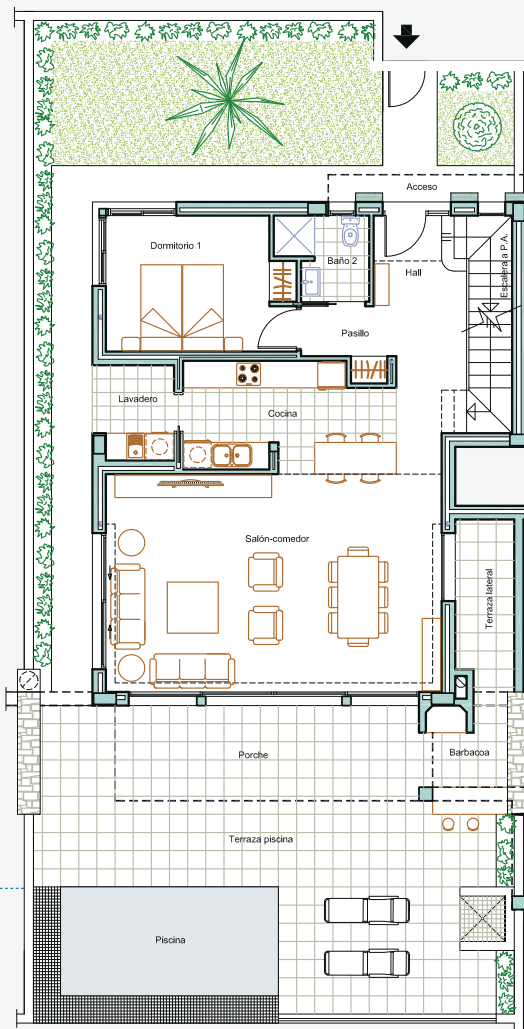
PLANTA SÓTANO

SUP. CONS. LOCAL = 65.60 m²
 SUP. CONS. GARAJE = 40.80 m²



PLANTA BAJA

SUP. CONS. VIVIENDA = 95.80 m²
 SUP. CONS. PORCHE = 14.70 m²
 SUP. CONS. TERRAZAS = 42.05 m²



PLANTA ALTA

SUP. CONS. VIVIENDA = 91.15 m²
 SUP. CONS. TERRAZAS = 14.70 m²