

VIVIENDA 9

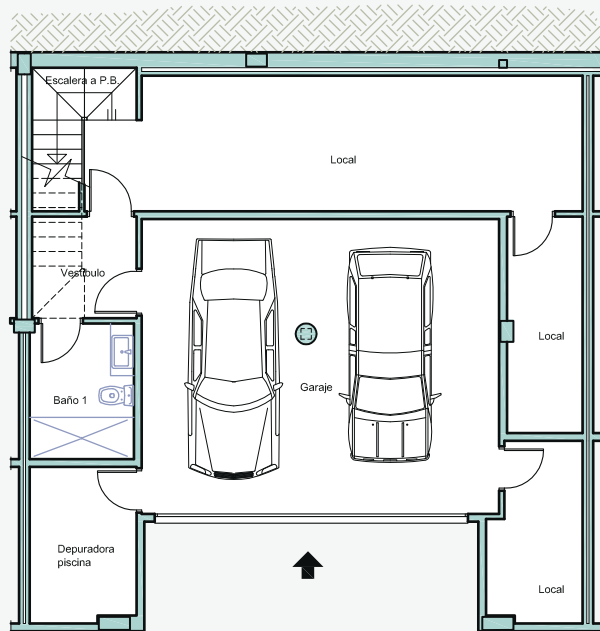
SUPERFICIE TOTAL CONSTRUIDA

SUPERFICIE VIVIENDA = 287.70 m²
 SUPERFICIE GARAJE = 40.80 m²

SUPERFICIE TERRAZAS = 141.85 m²
 SUPERFICIE JARDÍN = 74.95 m²

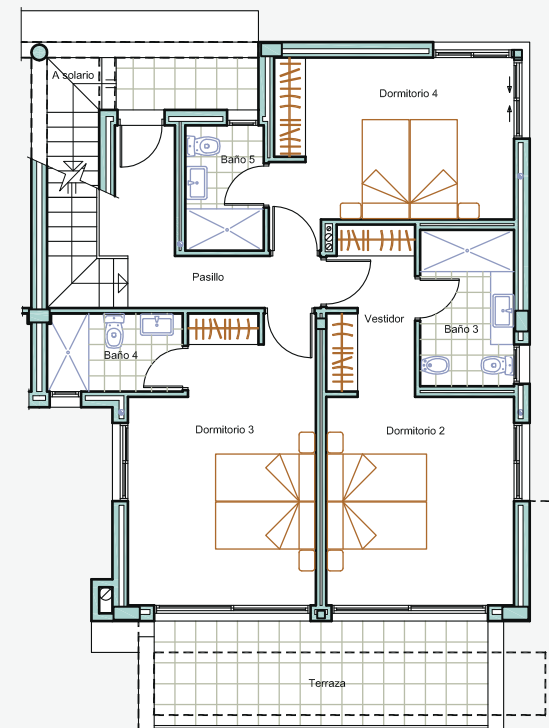
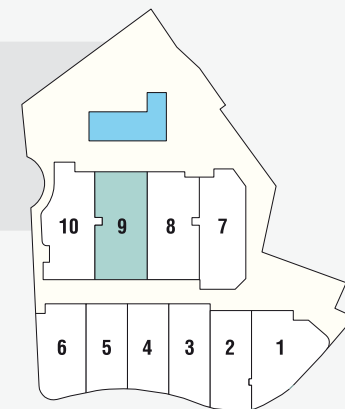
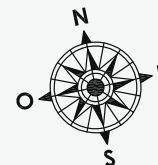
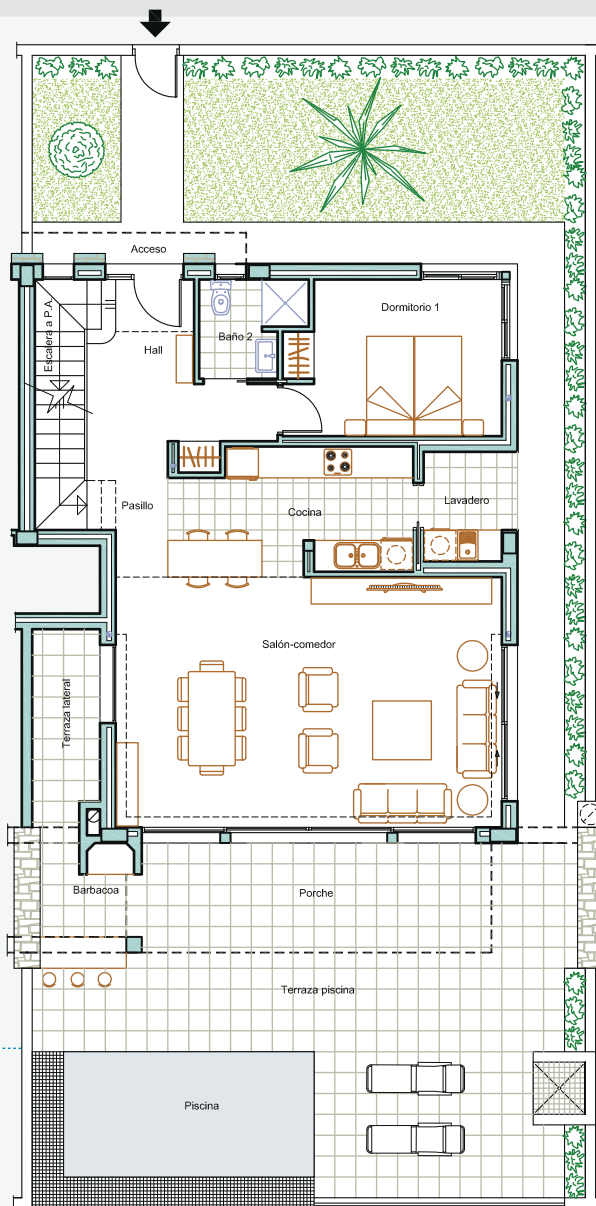
PLANTA SÓTANO

SUP. CONS. LOCAL = 65.60 m²
 SUP. CONS. GARAJE = 40.80 m²



PLANTA BAJA

SUP. CONS. VIVIENDA = 95.80 m²
 SUP. CONS. PORCHE = 14.70 m²
 SUP. CONS. TERRAZAS = 37.05 m²



PLANTA ALTA

SUP. CONS. VIVIENDA = 85.50 m²
 SUP. CONS. TERRAZAS = 15.90 m²